

# A fauna profunda das costas galegas

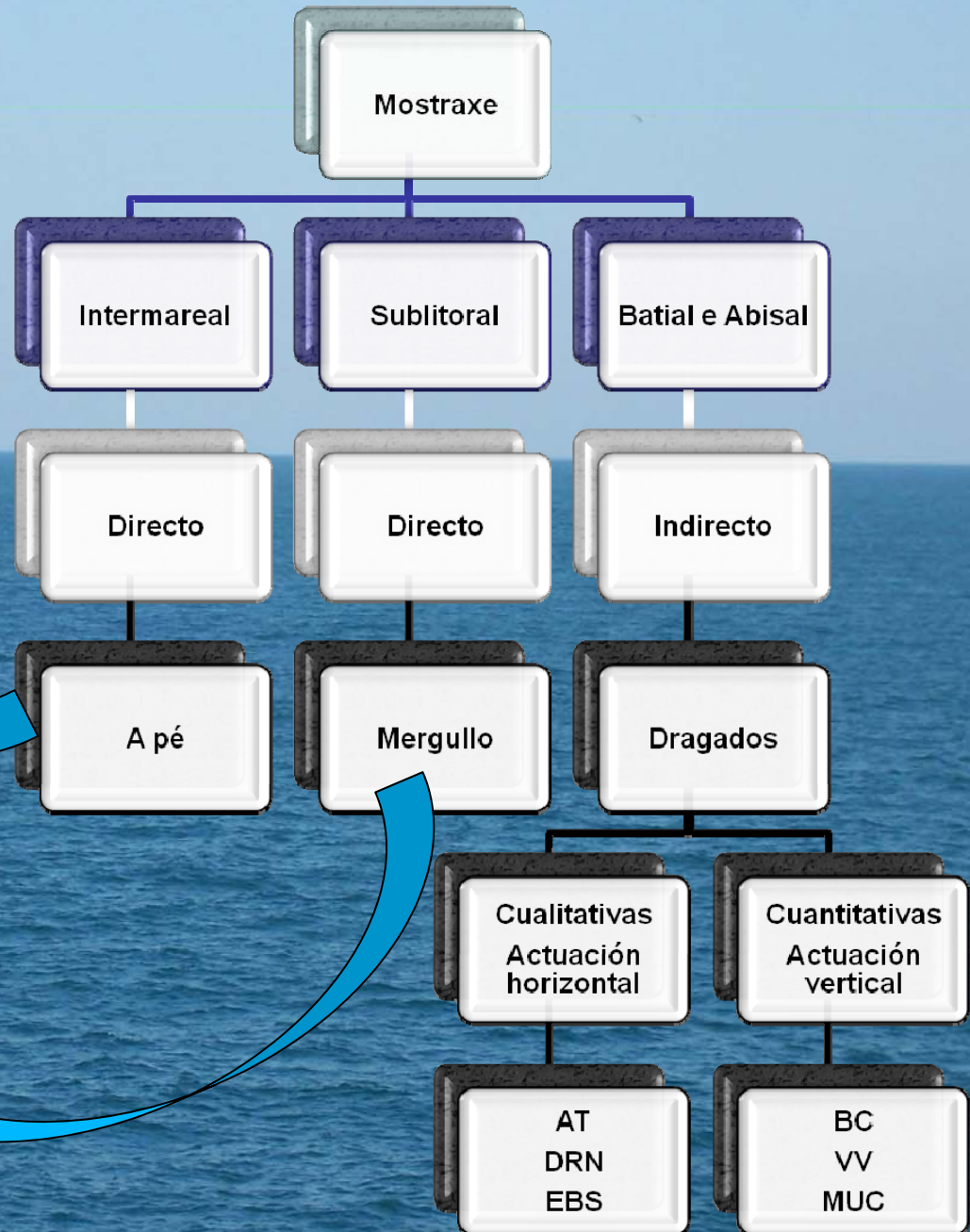
Grupo de investigación GI-2107  
OCEAnografía e LIMnoloxía  
M<sup>a</sup> CELIA BESTEIRO RODRÍGUEZ





**B.O. Sarmiento de Gamboa**







**Draga Agassiz**



**Draga Rectangular de Naturalista**



**Arrastre epibentónico**

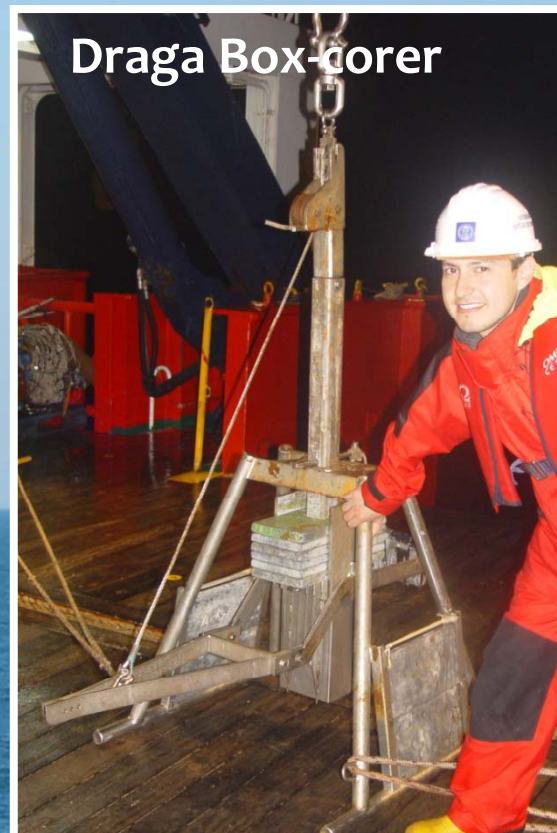




**Mostra**



**Peneirado**



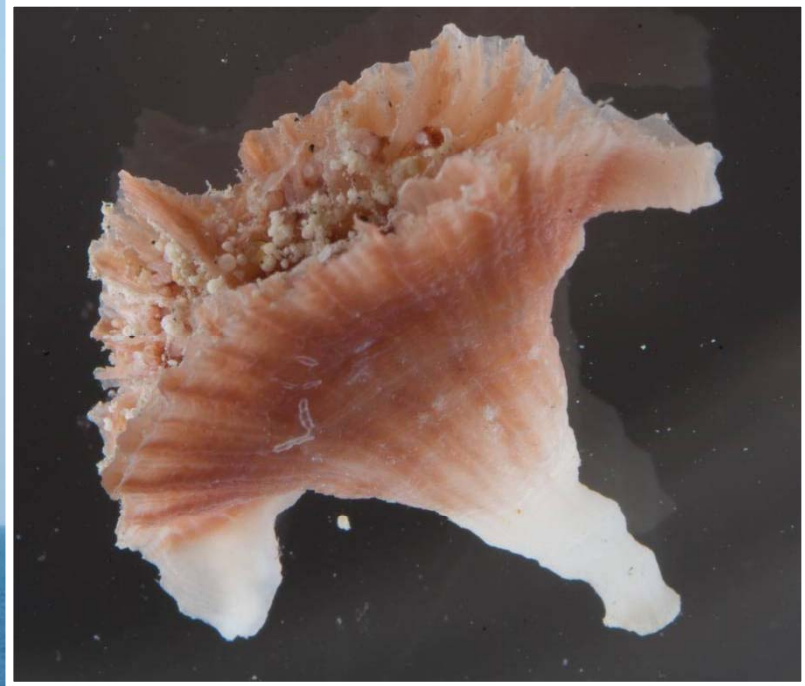
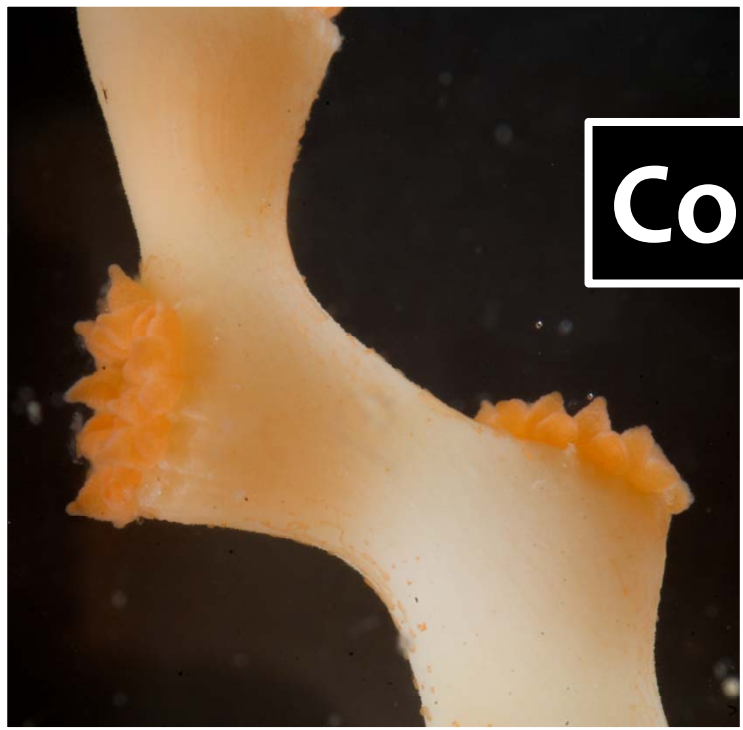
**Draga Box-corer**



**Mostra recolhida con box-corer**

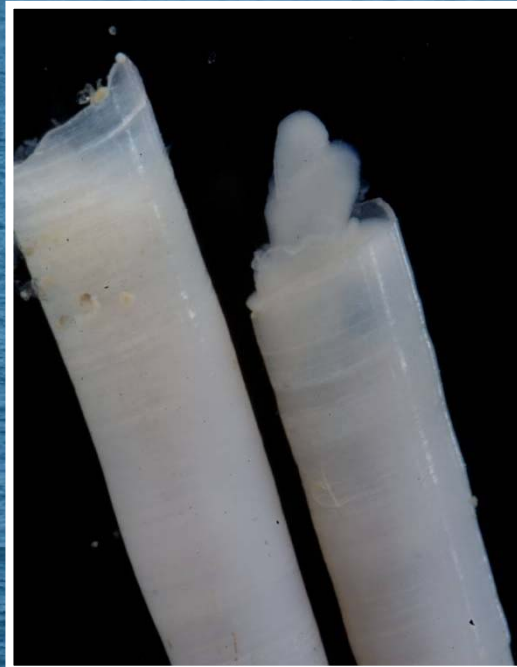


# Corais





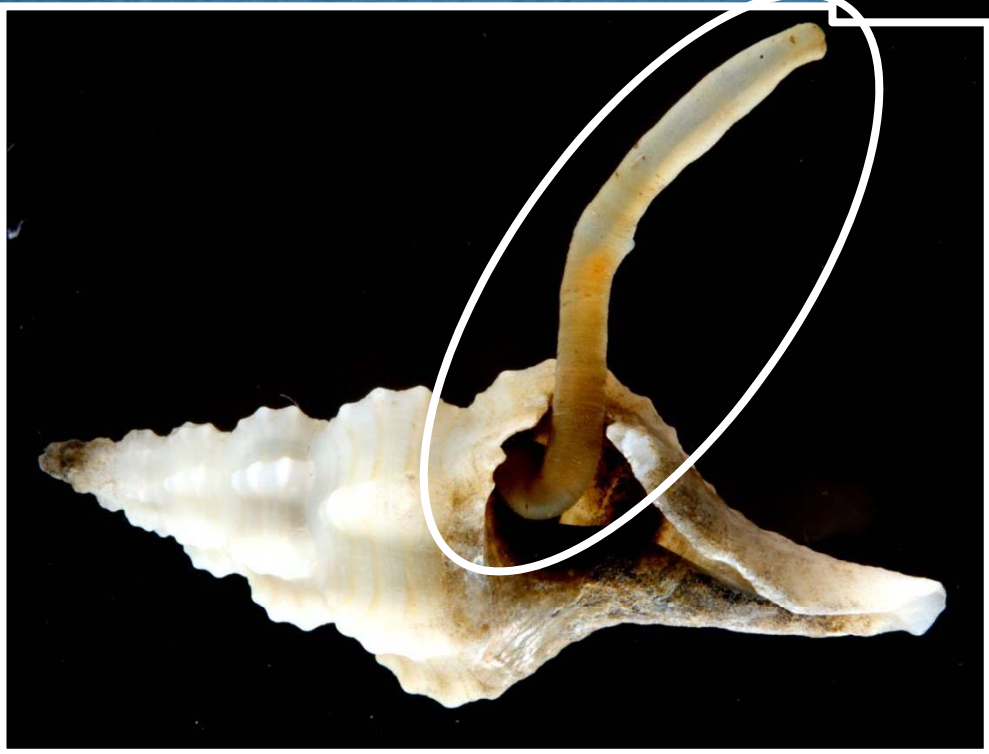
# Moluscos







**Vermes**





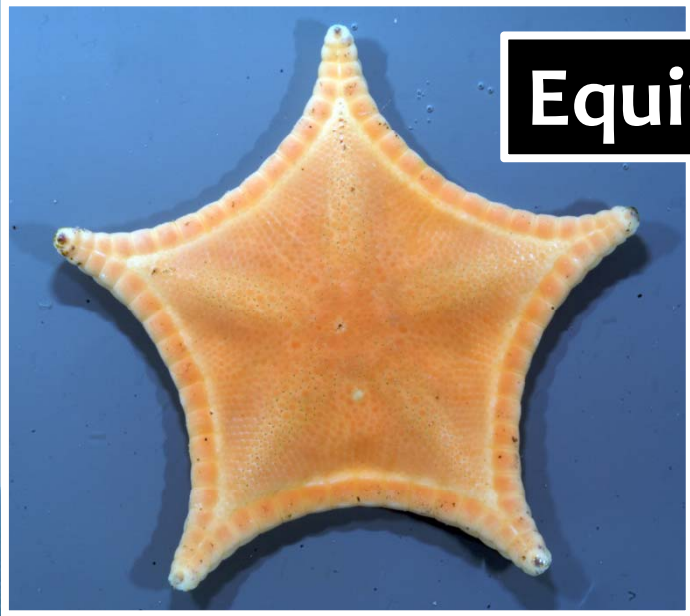


# Crustáceos





# Equinodermes







# Peixes





# CONCLUSIÓN

-  Falta de coñecemento
-  Dificultade de acceso e de recollida das mostras
-  Carestía das campañas
-  Dificultade de estudo do material obtido