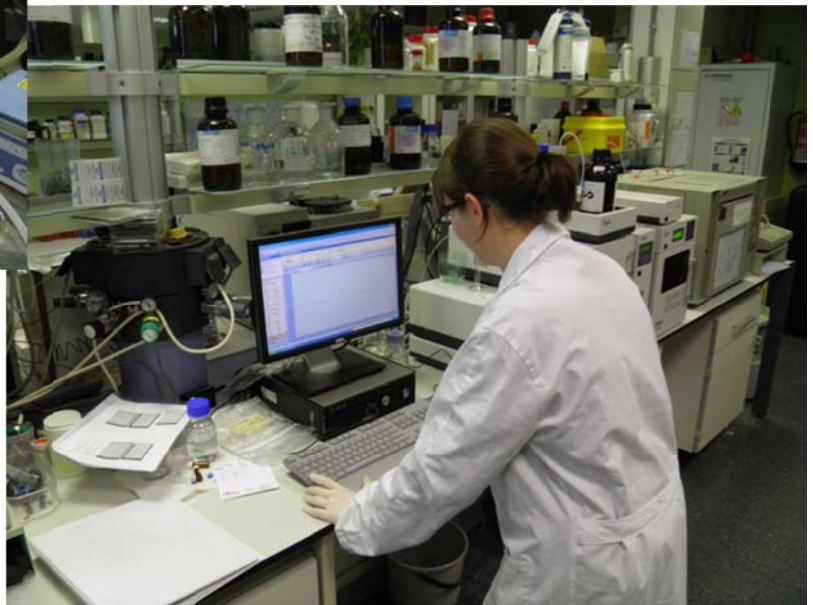




CENTRO INTERNACIONAL DE ESTUDOS DE DOUTORAMENTO E AVANZADOS DA USC (CIEDUS)



ESCOLA DE DOUTORAMENTO INTERNACIONAL EN CIENCIAS E TECNOLOXÍAS DA USC

# PhD in Chemical & Environmental Engineering

Web page: <http://www.usc.es/etse/doutoramentoEO>

e-mail: [pd.enxenariaquimica@usc.es](mailto:pd.enxenariaquimica@usc.es)



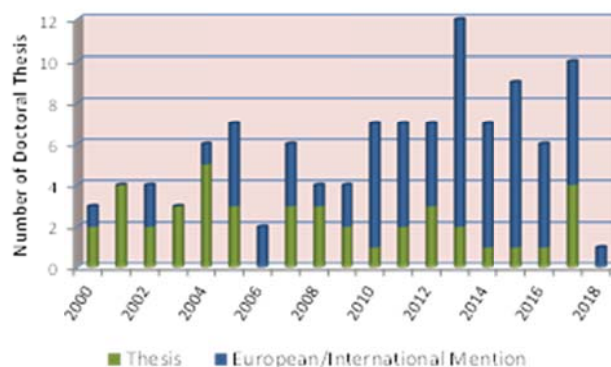
Quality Award (2003-2010)  
Excellence Mention (from 2011)

*“Mission: professional training, applied research results and contribute to create a technological culture in the field of Chemical & Environmental Engineering under the principles of excellence, ethics and sustainability”*



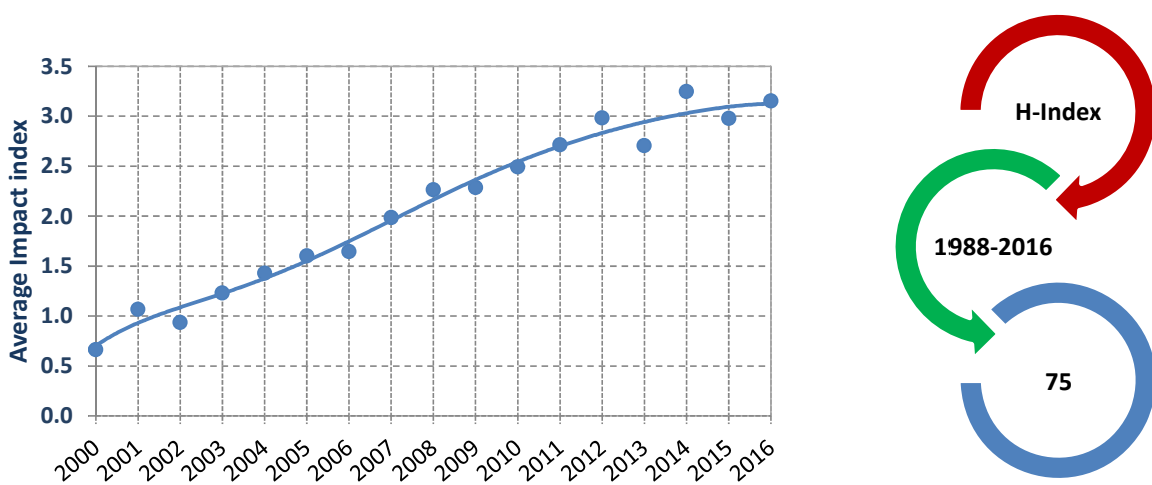
## DOCTORAL THESIS

Since 1950, 208 Doctoral Thesis have been presented in the Department of Chemical Engineering. In the last 17 years, there have been 109 Thesis, 67 of them with the "European Doctor Mention" (61.5%). To reach this category, students must spend at least 3 months as visiting researchers in other countries and they must present their thesis using at least two official UE languages. Moreover, the Department uses as a criterion to allow the defence of a Thesis that, related with its content, there must be at least two published articles in journals included in the Scientific Citation Index or a patent.



## PAPERS - SCI NUMBER – H-INDEX

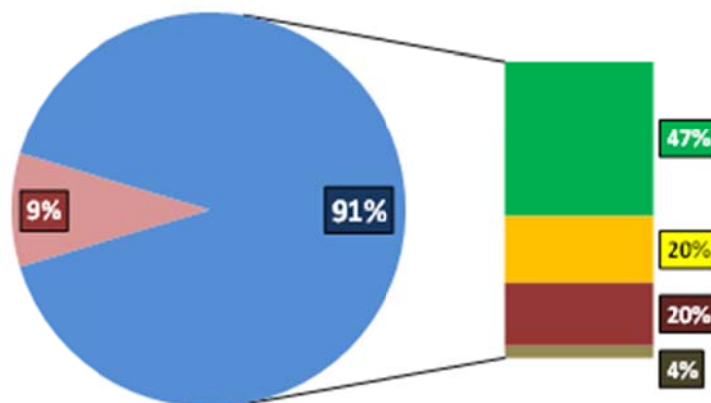
One of the different criteria that are used to define the scientific activity influence consists on the “impact index” calculation (SCI), which is obtained as the addition of the publications’ impact. The Department has kept a constant increase in this index during this decade, in such a way that its SCI in 2016 is almost six times bigger than the one obtained in 2000. This is due to the increasing number of published articles and their average impact index, which in 2011 was of 2,838.



## CAREER OPPORTUNITIES

Employability of PhD Students from the Department (2000-2018)

Unemployment Academia Industry Research Center Others





## RESEARCH GROUPS



### GI-1612 Lignocellulosic material usage

- Coordinator: Dr. Julia González
- E-mail: [julia.gonzalez@usc.es](mailto:julia.gonzalez@usc.es)



### GI-1613 Environmental Engineering and Bioprocess

- Coordinator: Dr. Juan M. Lema
- E-mail: [juanmanuel.lema@usc.es](mailto:juanmanuel.lema@usc.es)
- Web: [www.usc.es/biogrup](http://www.usc.es/biogrup)



### GI-2160 Tecnología para a Economía Circular e a SEguridade NATural

- Coordinator: Dr. Pastora Bello
- E-mail: [pastora.bello.bugallo@usc.es](mailto:pastora.bello.bugallo@usc.es)



### GI-1616 Separation Processes

- Coordinator: Dr. Ana M. Soto
- E-mail: [ana.soto@usc.es](mailto:ana.soto@usc.es)
- web: <http://www.usc.es/gl//investigacion/grupos/equifase/>



### GI-1618 Technologies for Industrial Bioproducts Development

- Coordinator: Dr. Ramón Moreira
- E-mail: [ramon.moreira@usc.es](mailto:ramon.moreira@usc.es)



### GI-1620 Environmental Modelling

- Coordinator: Dr. Juan José Casares
- E-mail: [juanjose.casares@usc.es](mailto:juanjose.casares@usc.es)



### GI-1621 Physical Properties and Transfer Processes

- Coordinator: Dr. José Manuel Navaza
- E-mail: [josemanuel.navaza@usc.es](mailto:josemanuel.navaza@usc.es)



### GI-2058 Sustainable Process and Product Engineering and Management

- Coordinator: Dr. Enrique Roca
- E-mail: [enrique.roca@usc.es](mailto:enrique.roca@usc.es)
- Web: [prodes.usc.es](http://prodes.usc.es)